

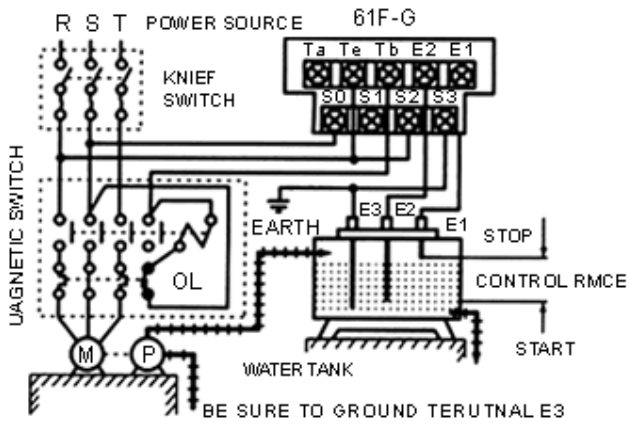
FLOATLESS RELAY: 61F-G



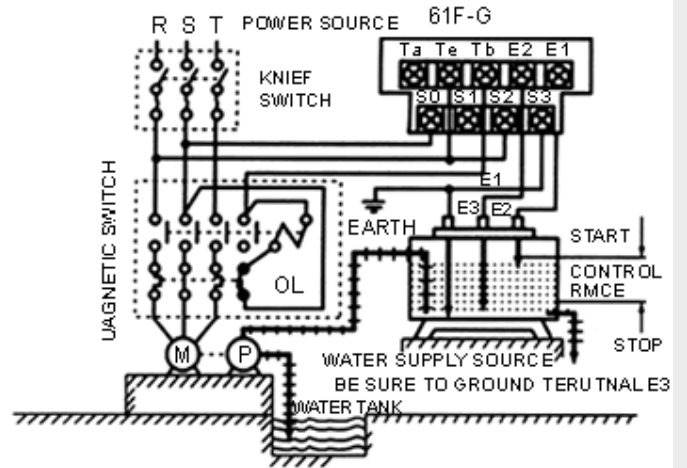
PRODUCT SPECIFICATIONS

CLASSIFICATION		FLOATLESS RELAY
MODEL		61F-G
DIMENSIONS(mm)		79.5H×58.4W×12.7D
SOCKET TYPE		-
SENSING MODE	GENERAL	61F-G
	HIGH SENSING	-
	LONG DISTANCE	-
	LOW DENSITY	-
	TWOLINES	-
RATED VOLTAGE		AC:110V,220V,240V,50/60HZ
INDICATOR OPERATING		Two LED's use for two Status
OPERATE VOLTAGE		85~110%of rated voltage
SECND VOLTAGE		8VAC (except highsensing 24VAC)
OPERATE RESISTANCE		4K MIN.(GENERAL)
RELEASE RESISTANCE		15K MIN.(GENERAL)
RESPONSE TIM		OPERATE:80 MSEC MAX.RELEASE:160MSEC MAX.
CONTACT RATING		5A,250VAC(RESISTIVELOAD)
LEGTH OF CABLE		1KMMAX.(GENERAL)
LIFE	MECHANICAL	3×10 ⁶ TIMES MIN
	ELECTRICAL	10 ⁵ times min
INSULATION RESISTANCE		100M (DC 500V)MIN
DIELECTRIC STRENGTH		1500VAC,50/60HZ,FOR 1MINUTE
CONSUMED POWER		3.2VA
AMBIENT TEMPERATURE		-10℃~+55℃
AMBIENT HUMIDITY		45~85%RH
WEIGHT		380g

CONNECTION DIAGRAMS&TIMING CHART 61F-G



General Water-supply Running



General Drainage Running